



Pans & Non-stick Coatings



Industrial coatings for trays, moulds and pans help to create:

- Non-stickness
- Easiness to clean
- Healthier environment
- Less production and maintenance costs
- Easiness to depan
- Excellent heath transmission
- Production procedures which endures +/- 270° and humidity



TURBEL COATINGS

What Turbel®Coatings offer you?

- Maximum durability of coatings by applying our know-how
- Higher number of cycles in your production, being improved continuously by our high-tech R&D Department
- Compliance with all world wide food graders; FDA/USDA/BGA

What we offer you, *more..* ?

- Deciding on tailor-made coating types for your own production conditions.
- Satisfied customer relationships with our specially given priority to after-sale services.
- Serving with fastest delivery times with best quality and competitive prices



TOAST PANS: CUPS

Pan Material

- Aluminized Steel
- Mild Steel
- Blue Steel

Standard Gauges

- 0,6, 0.8, 0.9, and 1.0 mm



Construction & Features

Deep Drawn Style



- Single piece joint free construction
- Excellent for hygiene
- Superior pan and coating life
- Curled top sections for increased strength
- Optional: Corrugations at the sides and/or bottom
- Optional: Holes at the bottom section of vertical sides
- Optional: Ø 4 mm or Ø 5 mm wire in the rim

Welded Style

- Completely welded corners
- Ideal for 90° or small batch and custom sizes
- Ø 5 mm wire in the rim
- Optional: Corrugations at the sides and/or bottom
- Optional: Holes at the bottom section of vertical sides



TOAST BREAD SETS: STANDARDS & OPTIONS

Grouping Standards

- Individual pans can be grouped into any desired combination and dimension that is technically feasible
- Standard Profile: 1 mm Aluminized Steel
- Standard profile widths: 37 mm & 47 mm
- Inner supports between cups to increase strength and stability
- Production month/year stamping



Strapping Options

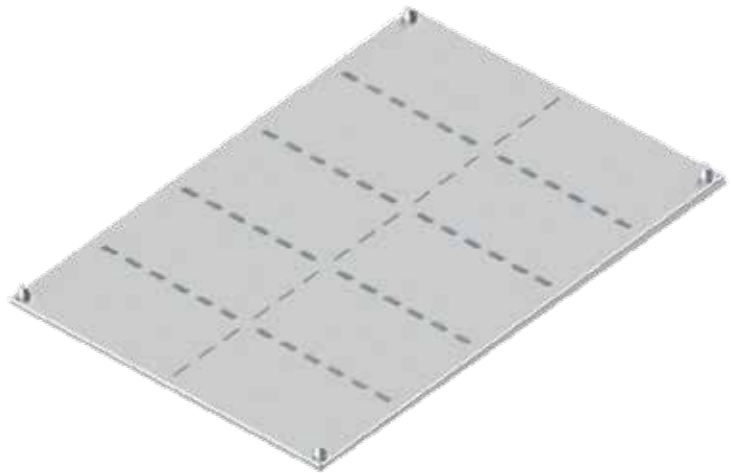
- Extensions at width and length to attain a certain outer dimension
- Auto gripping forms and parts for automated production and robot handling
- Custom logo stamping
- Double strapping for increasing strength and limitation for the nesting
- Reinforced strap joints with heavy gauge steel for maximum stability
- Custom profiles to fulfill and meet requirement of industrial lines



TOAST BREAD SETS: COVERS

Standard Options: Drop Set Cover

- Material: 1.5, 2.00, and 2.50 mm aluminized steel, stainless steel or mild steel
- Heat circulation holes at custom dimension and positions



Extra Features

Nesting Adaptors

- Adaptors at the corners for stacking
- Or stacking rod located around the top plane

HAMBURGER & SANDWICH ROLL BUN TRAYS

Pan Material & Construction

Material

- 0.6, 0.8, 0.9 or 1 mm aluminized steel
- 13 or 16 mm wide band in the rim

Standard Features

- 25 mm deep pan
- Positive nesting
- Fully covered corners
- Moulds are seamless deep drawn



Extra Features

Indents

- Flat Bottom
- Convex Bottom

Tray Corners

- Rounded Style

Reinforcements at the tray

Holes for Heat Circulation

- Embossments at the sides
- Structural ribs between the indents



CAKE PANS: CUP CAKE

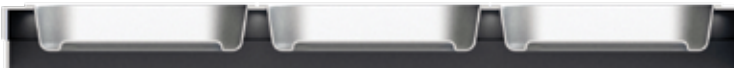
Pan Material

Material

- Mild Steel
- Blue Steel
- Aluminized Steel
- Stainless Steel

Standard Features

- Cups: 0.6, 0.8, 1.0 mm
- Chassis & Frame: 1.20 or 1.50 mm



Construction

Chassis Types

Bended Style

- 1.2 or 1.5 mm gauge material
- Type A & B Bottom Bending
- Completely welded corners

Hybrid Style

- Good for giant dimensions like 720x800 mm or bigger
- Chassis is composed of multi-parts
- Special Reinforcements at the bottom
- Round Corners

Assembly Types

Spot Welded

- Possible to any chassis type

Seamed Cup

- Possible for Hybrid Style Chassis

Intended Style

- Limited to technical feasibilities mostly available for Hybrid Style Chassis

CAKE PANS: OPTIONS

Extra Features

Holes at the chasis

- Located at the vertical sides or at the top section
- Improves water drainage after pan washing
- Improves heat circulation & baking
- Can be circular or obround



Reinforcements at the bottom

- Can be located any section at the bottom
- Improves the vertical strength of the pan



Welding Assembly

- Embossed frame: Cups are positioned at negative embossed sections to have a smooth top section
- Sealed cups locked into frame eliminating the need for spot welding



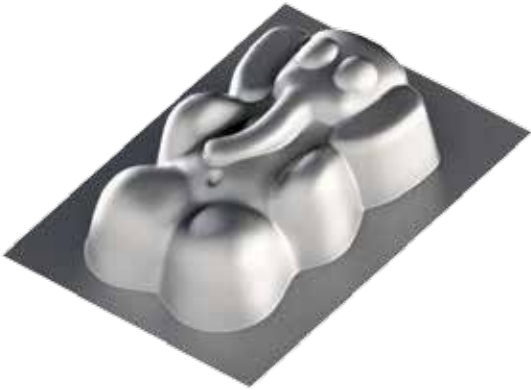
CUP CAKE PANS: TYPICAL FIGURES



Please Note:

- Cake pans are tailor made according to customers' specifications
- Cup moulds are manufactured solely to individual customer and kept at our tool inventory for unique customer for future use
- Figures above are supplied for viewing purposes
- Please contact for custom figures & dimensions

CUP CAKE PANS: TYPICAL FIGURES



Please Note:

- Cake pans are tailor made according to customers' specifications
- Cup moulds are manufactured solely to individual customer and kept at our tool inventory for unique customer for future use
- Figures above are supplied for viewing purposes
- Please contact for custom figures & dimensions

CUP CAKE PANS: ROUND & LAYER CAKE PANS

Pan Material

Material

- Mild Steel
- Aluminized Steel
- Blue Steel
- Aluminium

Standard Features

- Cups: 0.6, 0.8 or 1.0 mm for steel. 1.0, 1.20, 1.50 mm for aluminium
- Chasis & Frame: 1.0 for special formed profile or 5x20, 5x25 mm iron or aluminium bar or 1.20/1.50 mm steel



Construction

Cups

- Round cups are deep drawn
- Rectangular shapes are deep drawn or welded corner style
- Angel Food – Cream Cake are either seamless or seamed cup design in terms of technical feasibilitics.
- Straight side or curled rim designs are available options



Grouping

- Grouping can be single row like 1x2, 1x3 or 1x any, or multiple row like 2x2, 2x3 or 2x any
- Special sheet formed profiles are used as a grouping element as well as solid iron or aluminium bars
- Intermediate straps & supports are welded to the overall profile to increase strength and stability
- Multiple row alinements can be welded to a chasis (please refer to cup cake section for more details)



CAKE PANS: BATON & SLICED CAKE PANS

Pan Material

Material

- Mild Steel
- Aluminized Steel
- Blue Steel

Standard Features

- Cups: 0.6, 0.8 or 1.0 mm
- Chasis & Frame: 1.0 or 1.5 mm



Construction

Cups

- Deep drawn or completely welded corners
- Corrugations as slicing guides are possible at deep drawn cups

Chasis & Frame

- Cups are alined either in single or multiple rows
- Multiple row alinements are usually welded to a chasis (please refer to cup cake section for more details)
- Frames are manufactured from either bended steel, special formed profiles or a hybrid combination of both.

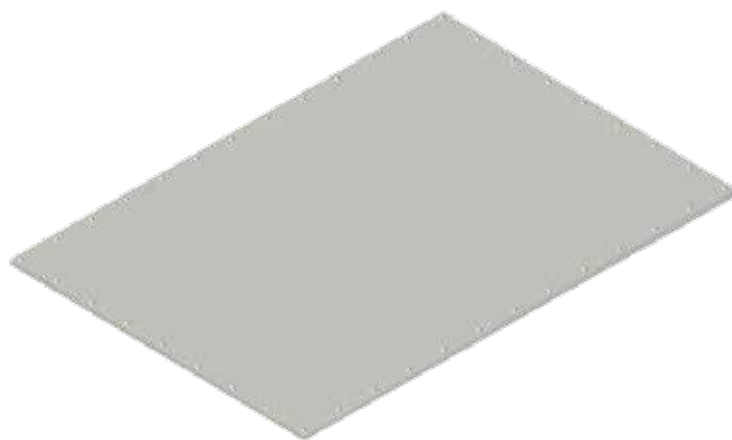
PAN MATERIAL

Material

- Aluminium
- Stainless Steel
- Mild Steel
- Blue Steel
- Aluminized Steel

Construction & Features

- Press Formed
- Bended Style
- Barband Frame
- Stainless Steel Hybrid Style (Meca Tray)
- Optional: Perforation Ø2 & Ø3 mm
- Typical Dimensions: 40x60, 50x70, 60x80, 80x120, 80x160, 80x200 cm
- Optional: Nesting adaptors



BAGUETTE TRAYS

PAN MATERIAL

Material

- Aluminium
- Stainless Steel



Construction & Features

Heavy Industrial Design

- Stainless Steel Frame + Aluminium or Stainless Steel corrugated section
- Sheet Gauges: 1.25 or 1.5 mm
- Ø2 mm perforation as standard
- Good for automated heavy industrial production
- Optional: Stacking Adaptors

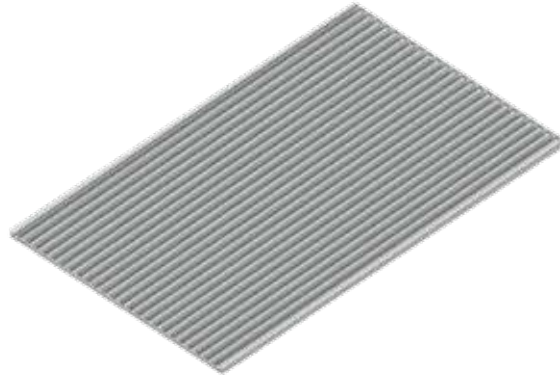


BREADSTICK TRAYS

Pan Material

Material

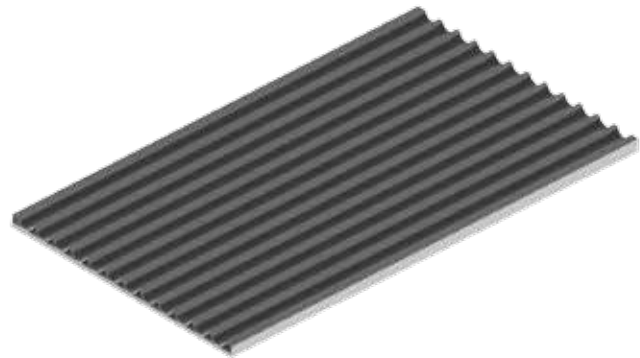
- Aluminium
- Aluminized Steel
- Mild Steel
- Stainless Steel
- Blue Steel



Construction & Features

Small & Mid Scale Production Design

- Usually made from aluminium
- Aluminized, mild steel, Blue Steel or stainless steel options available
- Ideal for small & mid scale production facilities
- Suitable for semi & full automated machines
- Optional: Ø2 mm perforation as standard
- Typical Dimensions: 40x60, 40x75, 45x75 cm
- 12, 14, 16, 18, 20, ... or any custom corrugation numbers available



Heavy Industrial Design

- Frame made from heavy industrial stainless steel profile
- Corrugated section from aluminium or stainless steel
- Optional: Ø2 mm perforation at the corrugated section
- Good for automated heavy industrial production
- Optional: Stacking Adaptors



Turbel Europe GmbH

Lehmkaul 5a 41849 Wassenberg
Heinsberg-Germany
Tel: +49 (0) 2433 458 13 41
www.turbel.de



Turbelco

Endüstriyel Kaplama San Tic. Ltd.şti
Eski Silivri Cd No:33 Mimarsinan
B.Çekmece-İstanbul
Tel: 0212 883 68 64-65
Fax: 0212 882 16 13
www.turbelco.com.tr



Turbel Tava ve Gıda San Tic. Ltd.

Selimpaşa Merkez Mah.
5007 Sok No : 17 Selimpaşa İstanbul
Tel : +90 212 723 44 44
Fax: +90 212 723 44 51



Turbelco Karaman Şube

Karaman Organize Sanayi Bölgesi
10. Sokak No: 15 Karaman